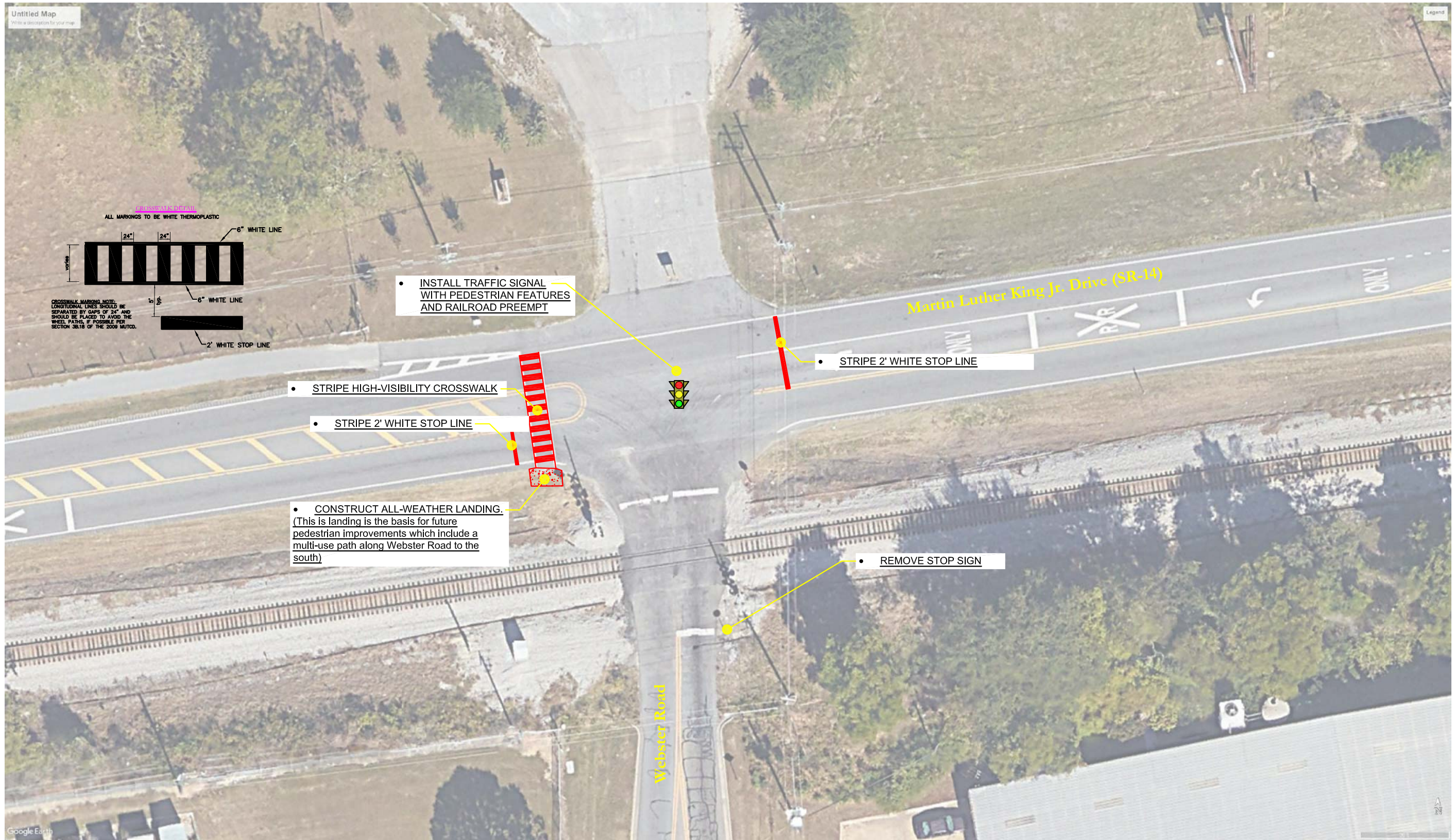


Section 4K:

Recommended Improvement Projects Isolated Intersections





Project MLK1

SKIPPER
CONSULTING INC

Legend



North

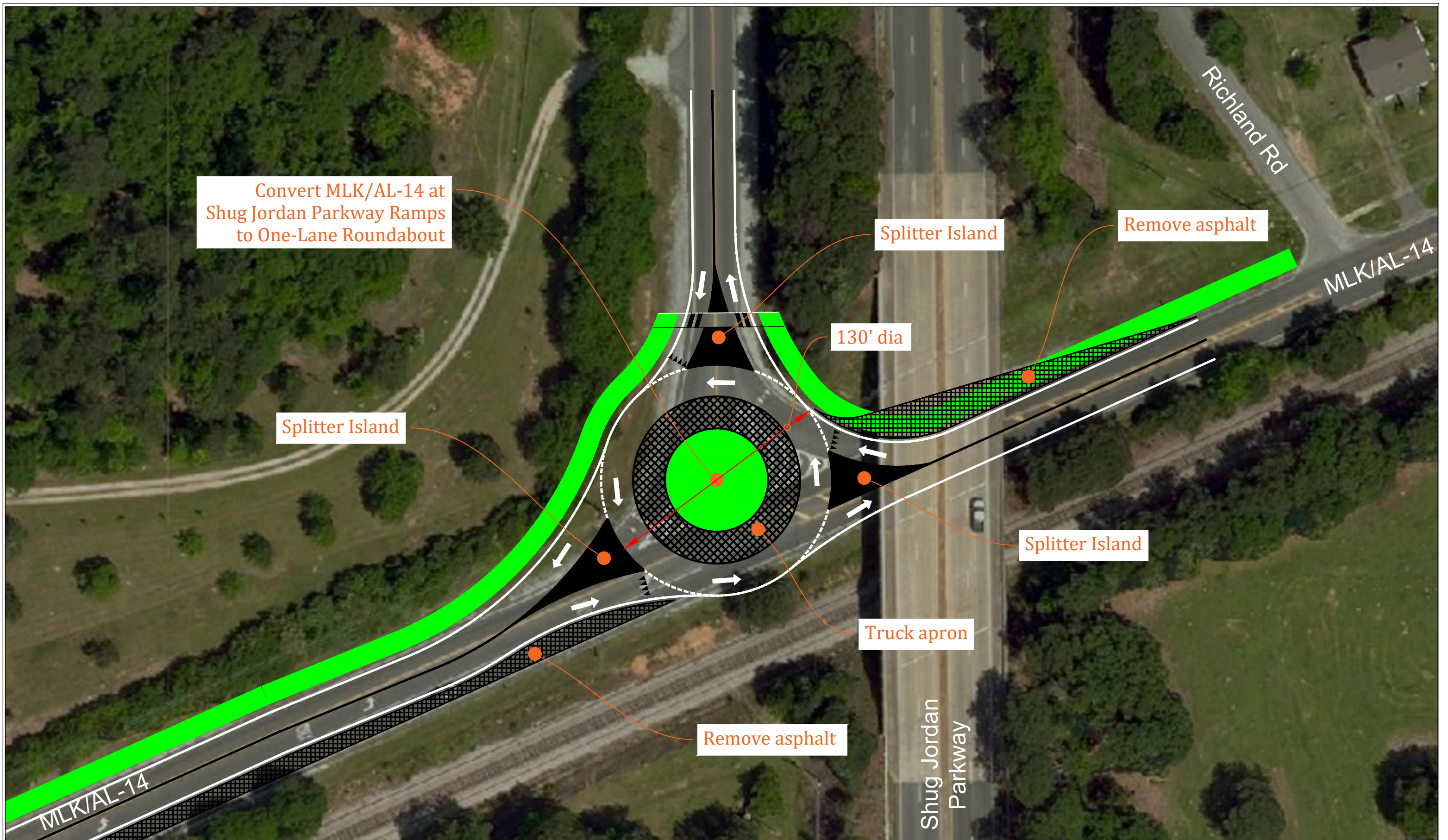
Graphic Scale: NTS

Figure 5
MLK Drive at Webster Road
Recommended Improvements

Auburn, Alabama

March 2019

Page 11



**Figure 9 - Recommended Improvements
MLK/AL-14 at Shug Jordan Parkway Ramps
Auburn, Alabama**



NOTES

- Conceptual RAB based on 130' dia inscribed circle
- Location of RAB constrained by railroad, bridge piers

Project MLK2

Scale: Not to Scale
Date: Oct 2018